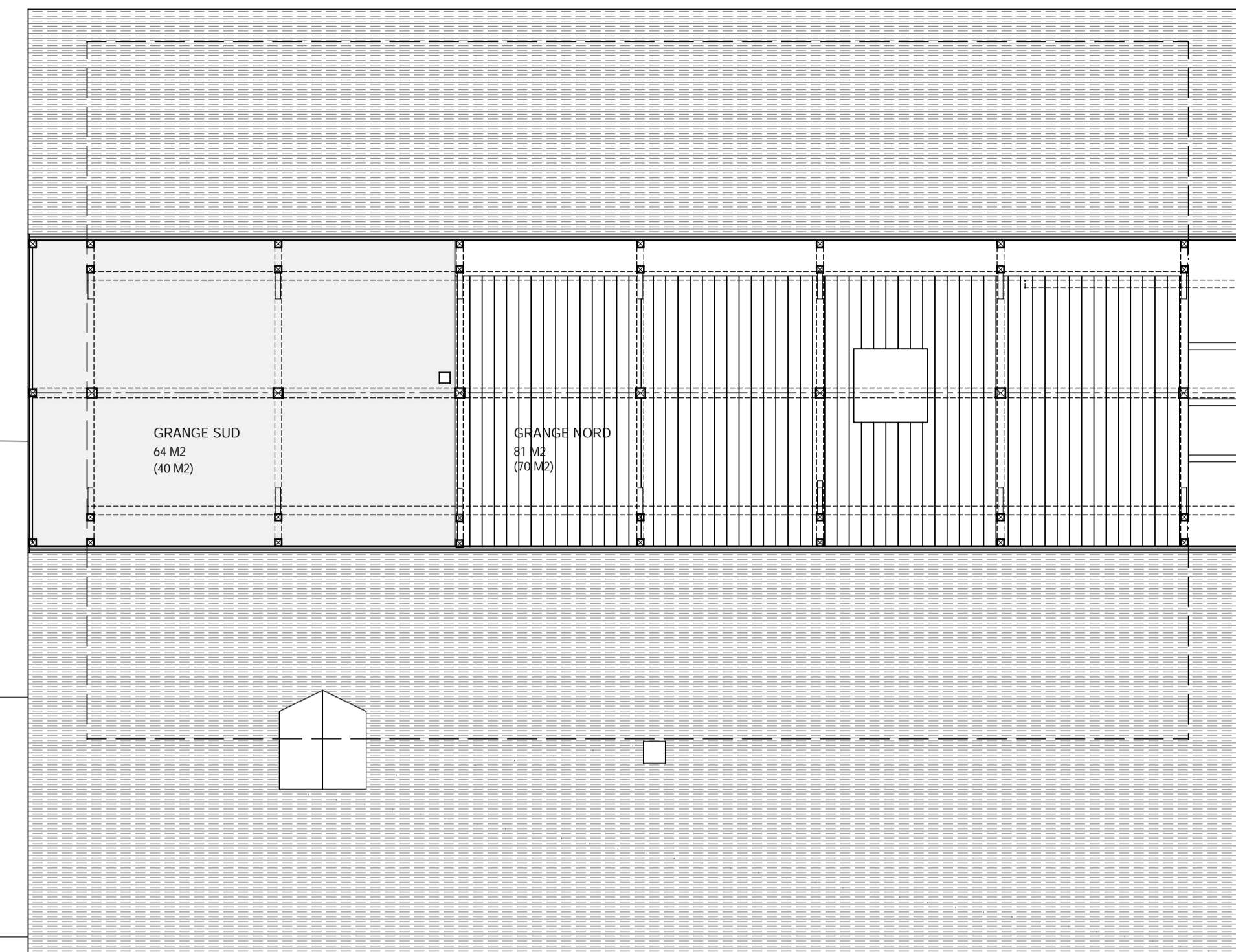
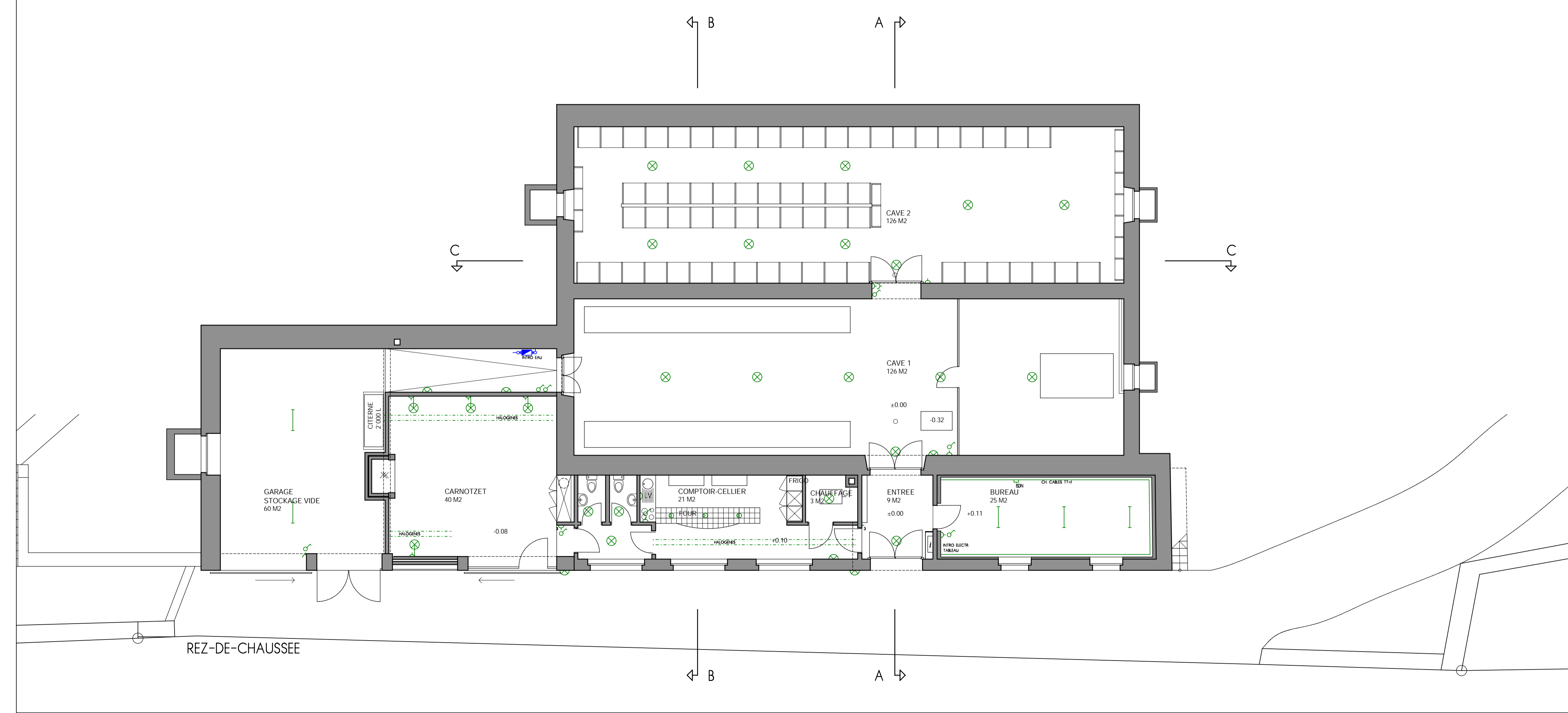


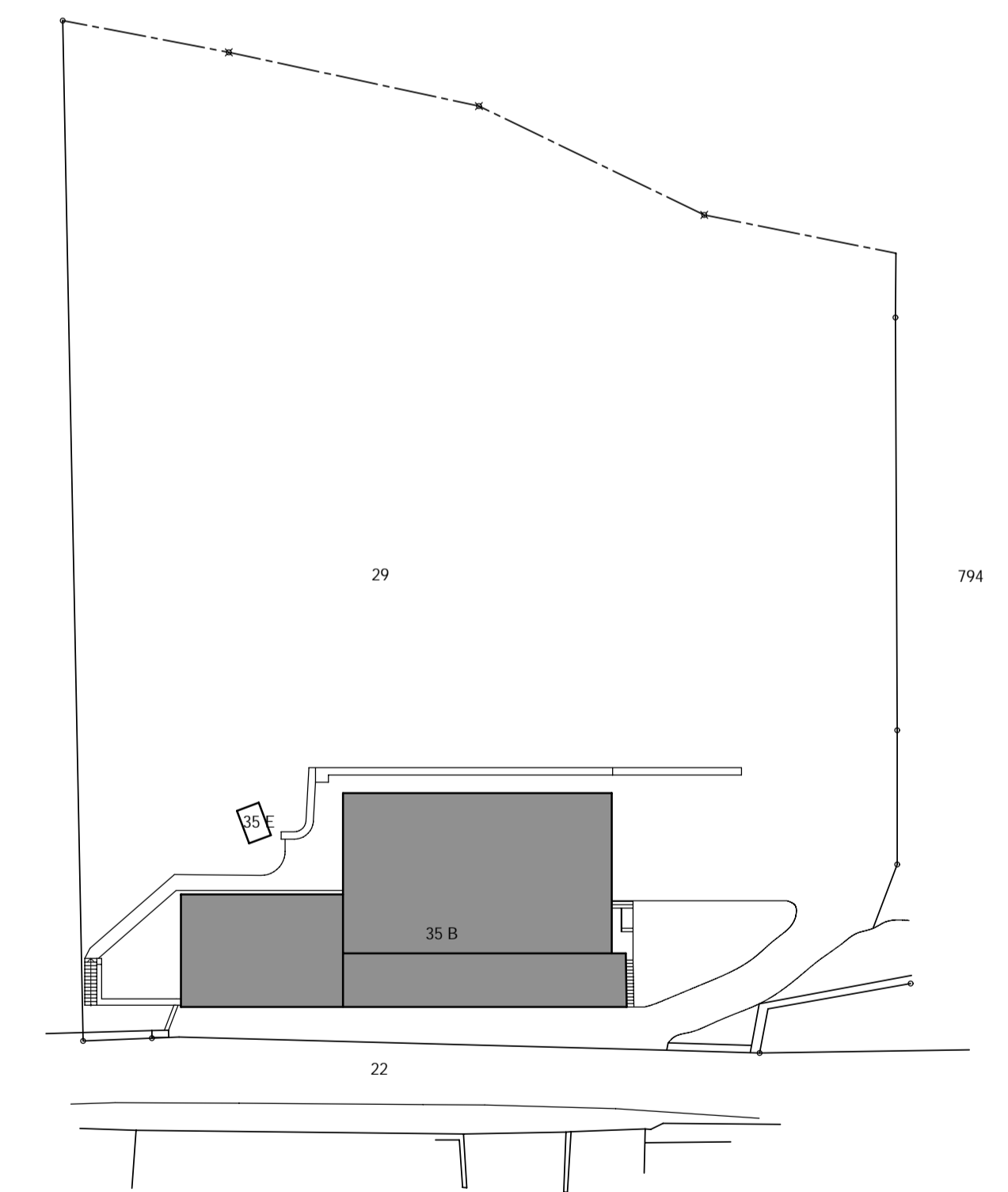
ETAGE



GRANGE



REZ-DE-CHAUSSEE



SITUATION 1:500

BATIMENT ROUTE DE FRANCE 35b SOYHIERES		NO DU PLAN 332 - C
RELEVÉ MARS 2001 SITUATION + PLANS		MODIFICATIONS
BURRI + TSCHUMI + BENOIT		NO DU PLAN 332 - C FORMAT : A3 DATE : 01/03/01 DESSIN : SI ECHELLE : 1/500
BUREAU D'ARCHITECTURE SARL TELEPHONE 032 422 46 32		- 37, RTE DE FRANCE 2805 SC OU 032 923 29 29 FAX 032 323 29 29